

Source: Parks and Recreation

To: City Council
From: City Manager and Staff

Council Meeting Date: Jul 15, 2013

Agenda Item No: Supplemental
Information
(A)

Re: Supplement to 2013 Parks, Recreation and Open Space Master Plan

EXECUTIVE SUMMARY:

The 2013 Parks, Recreation and Open Space Master Plan includes the Trails Master Plan and the Neighborhood Parks Master Plan. To help identify the differences between the older and proposed versions of those plans, staff has prepared a summary sheet that highlights proposed revisions. Council may find copies of the proposed 2013 plans and the last plans that were approved by Council, which were the 2008 Neighborhood Parks Plan and the 2010 Trails Master Plan, at the following website:

http://www.gocolumbiamo.com/ParksandRec/2013_Master_Plan/index.php#differences

DISCUSSION:

The 2013 Parks, Recreation and Open Space Master Plan includes proposed changes to the trails, neighborhood parks, community parks, and regional parks master plans. Staff is proposing revisions only to the trails and the neighborhood parks master plans. There are no changes proposed to the community and regional parks master plan as previous acquisitions have provided adequate coverage. Staff is currently working with the Greenbelt Coalition for the development of a natural resource plan, that when finished, will provide direction and priorities for natural resource planning.

While the comprehensive master plan is designed to be a 10 year planning document, the trails and neighborhood parks master plan are updated more often. The Trails Master Plan was last updated in 2010 and the Neighborhood Parks Master Plan was updated in 2008. This allows the City to keep up with significant growth areas of Columbia.

FISCAL IMPACT:

No fiscal impact to this report.

VISION IMPACT:

<http://www.gocolumbiamo.com/Council/Meetings/visionimpact.php>

This is a supplemental report to the 2013 Parks, Recreation and Open Space Master Plan Council item.

SUGGESTED COUNCIL ACTIONS:

Informational only.

2013

Trails and Greenbelt Master Plan

Proposed Changes

<u>Additions/Removals to the Plan</u>	<u>Priority</u>	<u>Funding</u>	<u>Description of Connectivity</u>
• <u>Thornbrook Connector</u> 0.9 miles Mill Creek to Thornbrook Parkway	Tertiary	Not Funded	Connects the Thornbrook Subdivision to the proposed Mill Creek Trail.
• <u>Little Bonne Femme Trail</u> 6.8 miles RBSP near Hill Creek Rd. to the State Katy Trail	Tertiary	Not Funded	Connects RBSP to the Katy Trail along the Little Bonne Femme Creek
• <u>Hominy Creek Trail</u> 1.0 miles Molly Lane to Mexico Gravel Road	Tertiary	Not Funded	Connects future residential areas to new High School.
• <u>Hominy Trail to Battle Ave. Connector</u> 1.3 miles Molly Lane to Battle Ave. Park	Tertiary	Not Funded	Connects the new High School to the residential areas to the west.
• <u>Hominy Creek Trail</u> 1.2 mile Clark Lane to Rice Road	Tertiary	Not Funded	Connects residential areas in northeast Columbia to the trail system via the Hominy Creek Trail.
• <u>Rice Rd. to Hinkson Creek Trail Connector</u> 0.4 miles Rice Rd. to Hinkson Creek Trail	Tertiary	Not Funded	Connecting a large residential area along Rice to the future phase of the Hinkson Creek Trail.
• <u>Parkside Drive Connector to Cosmo Park</u> 0.8 miles Creasy Springs Road to Cosmo Park along Parkside Dr.	Secondary	Not Funded	Creasy Springs Rd. at Texas to Cosmo Park Parkside Drive round-a-bout.
• <u>Wilson Park Connector</u> 0.7 miles Old 63 Roadside Park to Rollins Rd.	Primary	Not Funded	An east-west connector from the Shepard Blvd. and Old 63 intersection to East Campus at Rollins.
• <u>Proctor Park Connector to Bear Creek Trail</u> 0.4 miles Proctor Park to Garth Nature Area	Tertiary	Not Funded	A trail connecting Proctor Park to the Bear Creek Trail at the Garth Nature Area.
• <u>Red Oak Connector</u> 0.2 miles Lynnwood to Crawford via existing Red Oak ROW	Removed	Not Funded	A connector via Red Oak Road right-of-way connecting Lynnwood to Crawford Street.
• <u>Cosmo-Bethel Connector</u> 0.7 miles Bedford Walk trail to South Providence Trail	Secondary	Not Funded	A trail connecting through Cosmo-Bethel Park and Rock Bridge High School from Bedford Walk to the South Providence Trail.

Changes in Priority Classification

Note: All “unfunded” projects unless otherwise noted

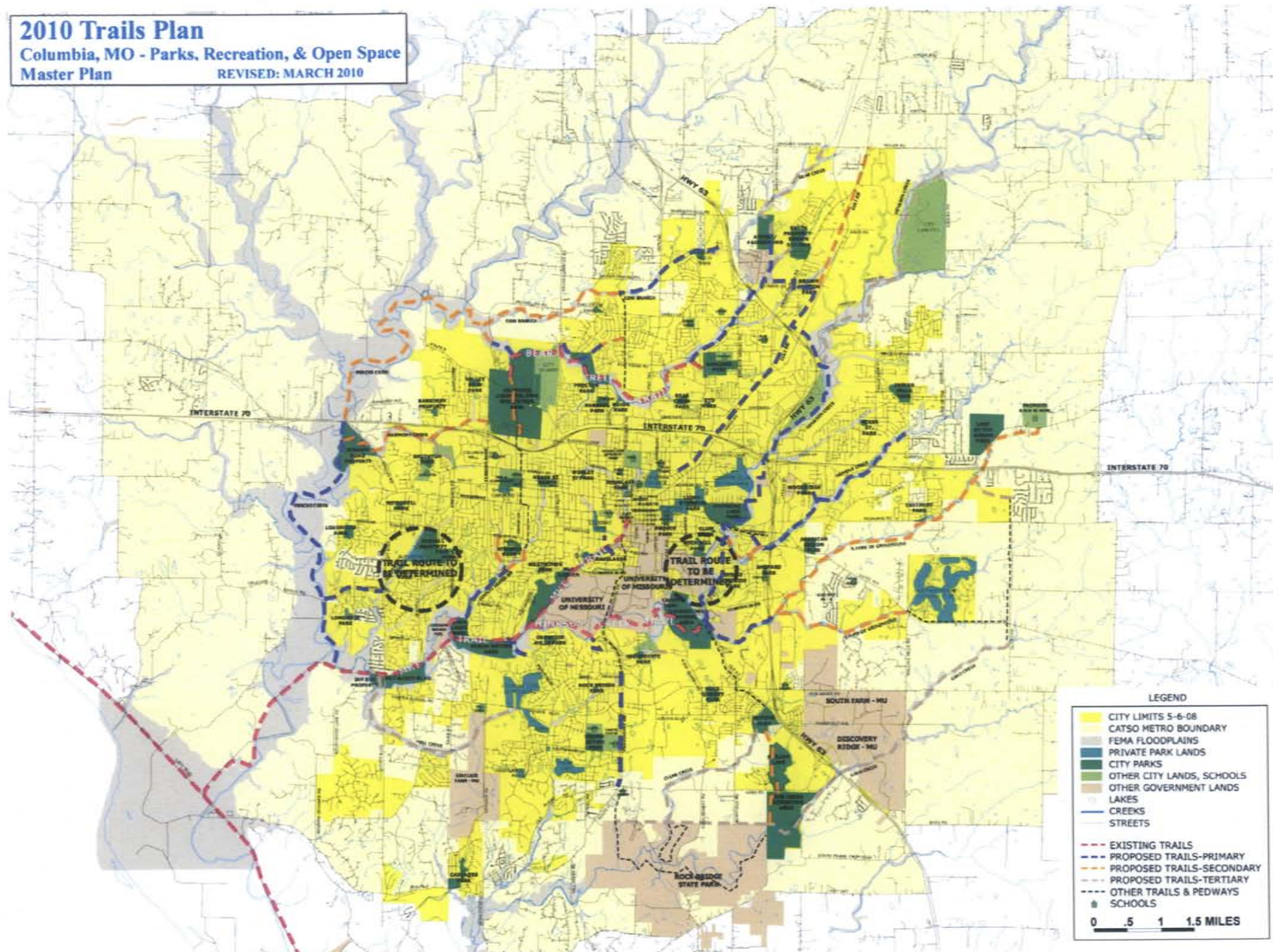
	<u>2010 Priority</u>	<u>2013 Priority</u>	<u>Description of Connectivity</u>
• <u>North Fork of the Grindstone Trail</u> 5.3 miles Maguire Blvd. to Battle High School	Secondary	Primary	Connects the new Battle HS to trail system
• <u>Cosmo Trail Connections</u> 0.8 miles Stadium diverging diamond to the Bear Creek Trail	Secondary	Primary	A north-south trail from the Cosmo hard surface trail to the Bear Creek Trail in north Cosmo Park.
• <u>Hominy Creek Trail</u> 0.8 miles Old 63 to Green Valley Dr.	Secondary	Primary	Connects the Hinkson Creek Trail to the Hominy Creek Trail along Hominy Creek.

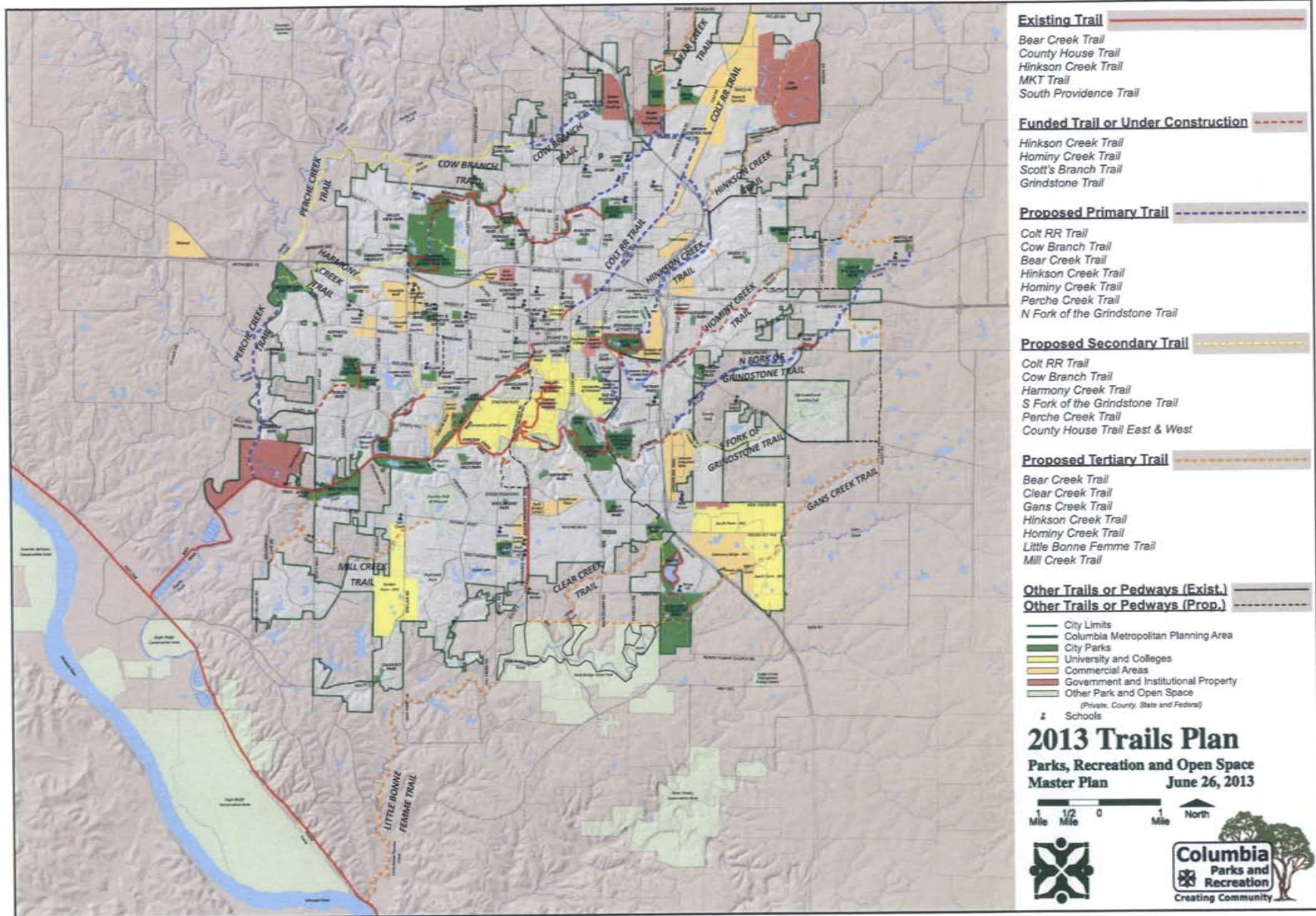
Projects Completed, Funded or Under Construction Since 2010**Status in 2010**

• <u>Scotts Branch Trail</u> 1.5 miles Rollins Road to Scott Blvd.	Primary
• <u>County House Trail</u> 2.0 miles Twin Lakes Recreation Area to Stadium Blvd.	Primary
• <u>Hominy Creek Trail</u> 2.6 miles Green Valley at Highway 63 to Clark Ln.	Primary
• <u>South Providence Trail</u> 1.7 miles Green Meadows Rd. to Rock Bridge Elem.	Primary
• <u>Greenbriar Connector</u> 0.4 miles Greenbriar Rd. to Hinkson Creek Trail	Primary
• <u>Grindstone Creek Trail</u> 1.75 miles Grindstone Nature Area to Maguire Blvd.	Primary
• <u>Hinkson Creek Trail</u> (Pedway) approx. 2.0 miles Grindstone Nature Area to Stephens Lake Park	Primary
• <u>Grasslands to Garth Connector</u> 0.2 miles Grasslands Park to MKT and MKT to Garth Ave. at Lathrop	Primary
• <u>Katy Place Connector</u> 0.4 miles Connecting Trail from Forum 8 Theater to MKT Trail	Not shown on Trails Plan
• <u>Philips Lake and Gans Creek Recreation Area Trails</u> approx. 2 miles Trails internal to both parks. Also serving as a north-south connector from Nifong Park to RBSP.	Secondary

2010 Trails Plan

Columbia, MO - Parks, Recreation, & Open Space
Master Plan
REVISED: MARCH 2010

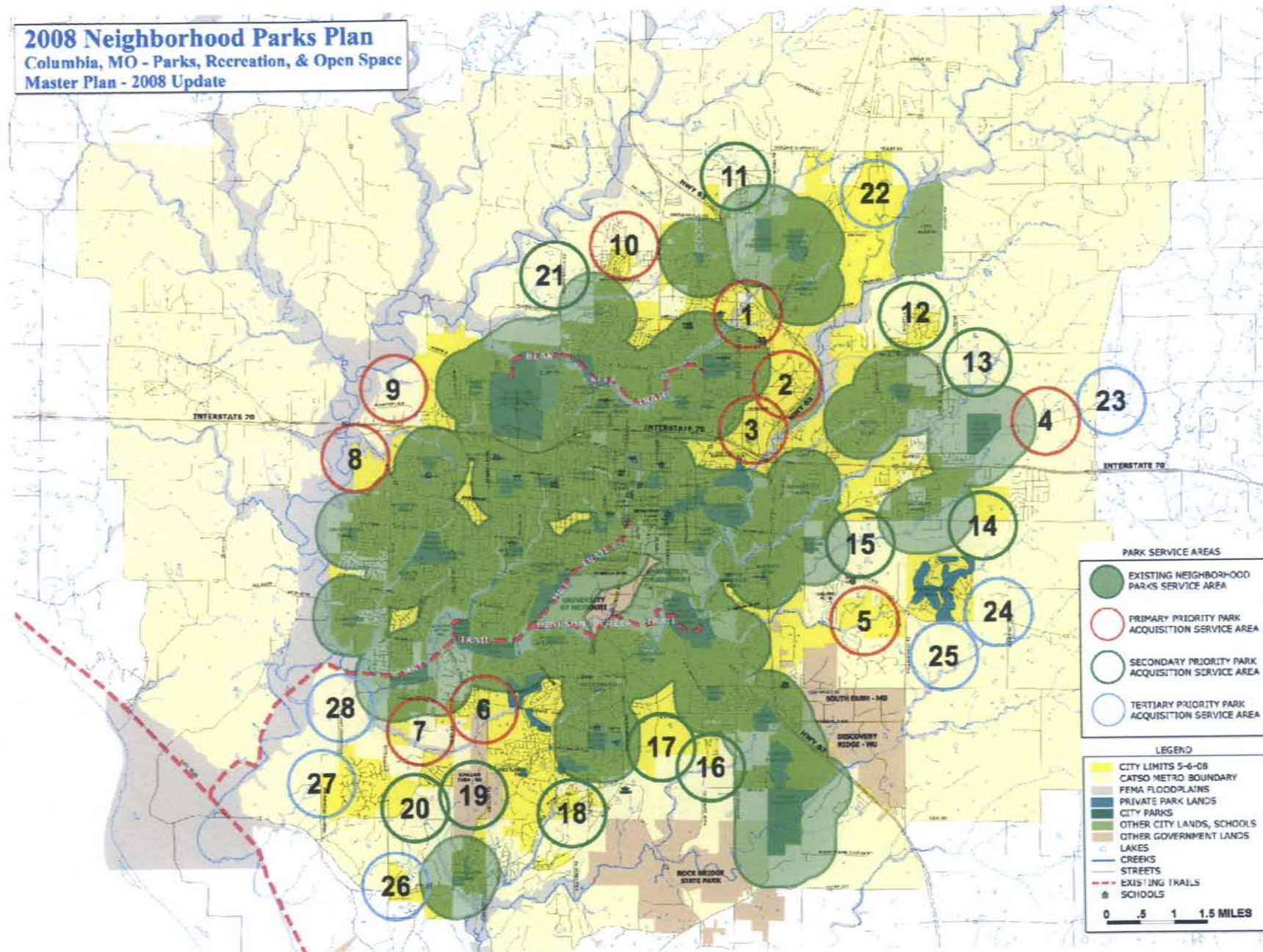


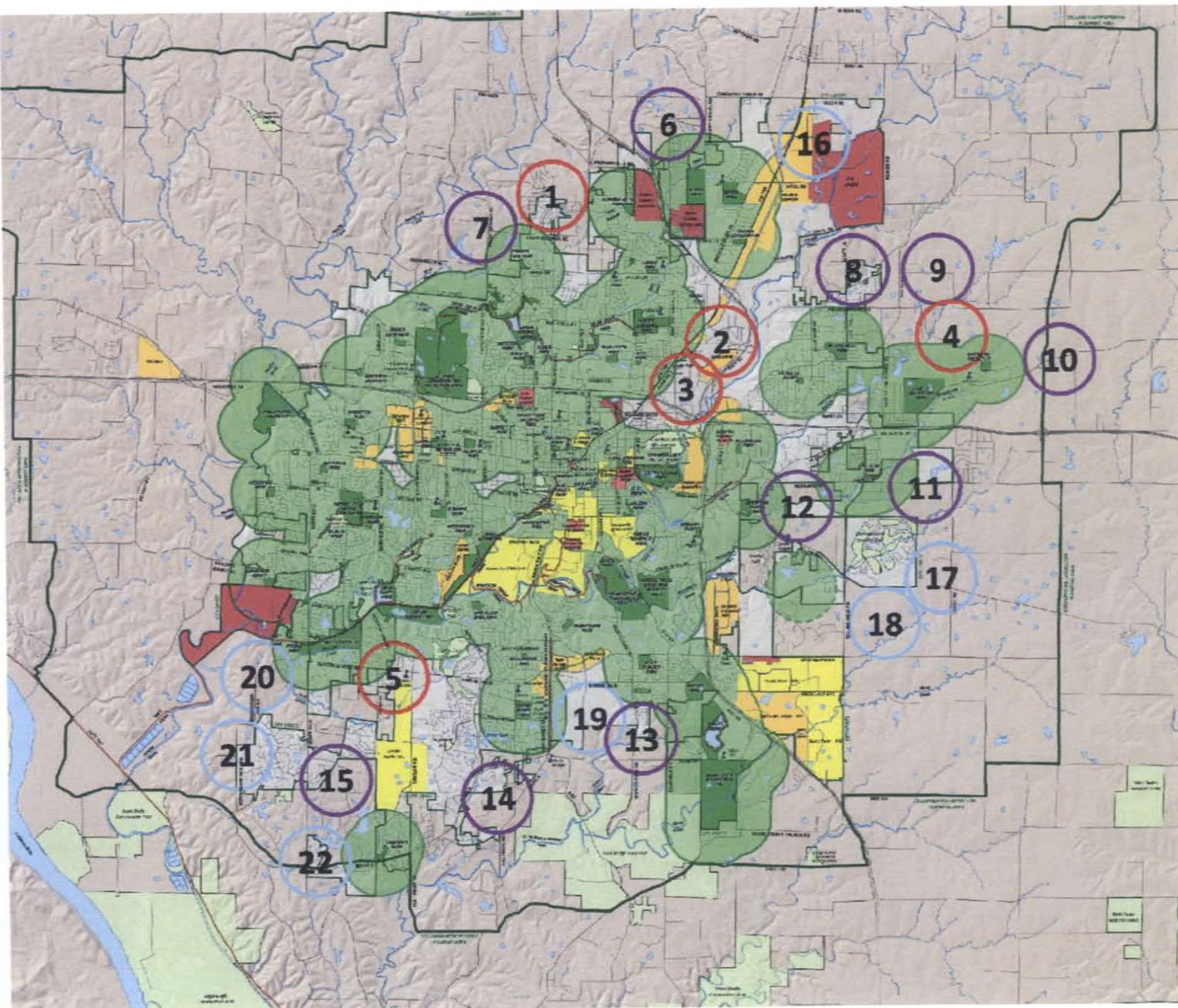


2013 Neighborhood Parks Master Plan Proposed Changes

<u>Additions/Removals to the Plan</u>	<u>2008 Plan #</u>	<u>2013 Plan #</u>	<u>Description of Change to Plan</u>
<ul style="list-style-type: none"> North of Blue Ridge School and east of Oakland Gravel Road. 	1	Removed	Removed from plan due to lack of available potential sites. Area primarily commercial/office.
<ul style="list-style-type: none"> South of County Rd. WW and east of El Chaparral Neighborhood 	5	Scheduled for Acquisition	Developer has agreed to transfer a portion of the property adjacent to the large lake to the City for park land.
<ul style="list-style-type: none"> East of Scott Blvd. and south of Vawter School Road. 	7	Removed	Large lot development and land prices make the area not conducive to park development.
<ul style="list-style-type: none"> Sinclair Farm Area 	19	Removed	The University does not seem to have plans to sell property in this area.
<ul style="list-style-type: none"> South of Interstate 70 near Perche Creek 	8	Acquired	Park land was already acquired along Strawn Road to serve as neighborhood park in this area.
<ul style="list-style-type: none"> North of Interstate 70 near Barberry Ave. 	9	Acquired	Neighborhood park was acquired along Barberry Ave.
<u>Changes in Priority Classification</u>	<u>2008 Priority</u>	<u>2013 Priority</u>	<u>Description of Change</u>
<ul style="list-style-type: none"> Number 10 in 2013 Number 23 in 2008 	Tertiary	Secondary	Priority moved up with likelihood of residential development near Battle HS.
<ul style="list-style-type: none"> Number 19 in 2013 Number 17 in 2008 	Secondary	Tertiary	Less priority for park land acquisition with type of development in the area and land costs.
<u>Location Changes</u>	<u>2008 Plan #</u>	<u>2013 Plan #</u>	<u>Description of Change to Plan</u>
<ul style="list-style-type: none"> North of Lake of the Woods Park 	13	9	Location shifted north due to likely development patterns around Battle HS
<ul style="list-style-type: none"> Battle High School area 	4	4	Location shifted north and west due to likely development patterns around Battle HS

2008 Neighborhood Parks Plan
Columbia, MO - Parks, Recreation, & Open Space
Master Plan - 2008 Update





-  Existing Park 1/2 Mile Radius
-  Scheduled for Acquisition
-  Primary Priority Park Acquisition Service Area
-  Secondary Priority Park Acquisition Service Area
-  Tertiary Priority Park Acquisition Service Area

-  City Limits
-  Columbia Metropolitan Planning Area
-  City Parks
-  University and Colleges
-  Commercial Areas
-  Government and Institutional Property
-  Other Park and Open Space
(Private, County, State and Federal)
-  Existing Trails
-  Trails Under Construction
-  Schools

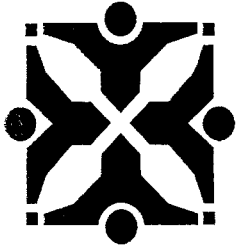
2013 Neighborhood Parks Plan

Parks, Recreation and Open Space
Master Plan

March 15, 2013

1 Mile 1/2 Mile 0 1 Mile North





Source: Parks and Recreation

Agenda Item No: Item (A)

To: City Council

From: City Manager and Staff

Council Meeting Date: Jul 1, 2013

Re: Public Hearing for the 2013 Parks, Recreation and Open Space Master Plan Draft Plan

EXECUTIVE SUMMARY:

As directed by City Council, the Department of Parks and Recreation has completed a public review of the proposed 2013 Parks, Recreation and Open Space Master Plan. The public review included multiple public meetings; placing draft copies of the plan at various public locations; posting the plan on the Department's website; and conducting a formal public hearing by the Park and Recreation Commission. Other Commissions, including the Energy & Environment, Bicycle and Pedestrian, Disabilities, Planning and Zoning and Historic Preservation all had the opportunity to provide input. Based on comments received during the review process, revisions as outlined on Attachment C are recommended to be included in the final plan. Council may find a copy of the plan online at http://www.gocolumbiamo.com/ParksandRec/2013_Master_Plan/index.php. If a Council member prefers a hard copy, please inform staff and a hard copy will be made available. Staff is requesting a resolution calling for a public hearing and after the public hearing, seeking input from Council on their recommendations for the final plan.

DISCUSSION:

At the April 15, 2013 Council meeting, staff presented Council with a report seeking approval to conduct a final round of public review of the proposed 2013 Parks, Recreation and Open Space Master Plan. A copy of that report is included as Attachment A.

Council also directed staff to solicit comments from the following commissions at either their April, May or June meetings: Parks & Recreation, Bike and Pedestrian, Disabilities, Historic Preservation, Planning & Zoning, and the Energy and Environment.

Prior to many of the commission meetings, public input was solicited by placing copies of the plan at the Daniel Boone Regional Library, parks and recreation offices and on-line at the parks and recreation web site. Readers of the plan were encouraged to either complete comment forms at the various sites or submit their comments via email or an online form. The meetings began with an Interested Parties meeting on Wednesday, April 24 at the ARC. Just over 50 people attended this meeting and either filled out comment forms or discussed their interests with park planning staff. Additionally, input was solicited at the following meetings:

April 26: Chamber of Commerce--Emerging Issues Committee

April 28: Friends of Columbia Parks

May 13: Bike, Walk and Wheel Week Open House

May 15: Family Fun Fest

May 18: Trails Day

May 19: Unitarian Universalist Church of Columbia

Meetings with the various City Commissions began with the Disabilities Commission on May 9 and ended with the Bike and Pedestrian Commission meeting on June 19. In general, all of the Commissions supported the plan as presented. The Parks and Recreation Commission was presented the plan at their April 18 meeting conducted an official public hearing on the plan at their May 16 meeting. This public hearing included a brief presentation by staff and then was opened to public and Commission comment. There were no public speakers as many individuals and organizations already presented their comments to the staff at various public meetings. Attachment B represents the minutes of this meeting.

Based on comments received through out the review process, staff prepared and presented to the Commission the attached "Public Comments and Staff Recommendations Summary" (Attachment C). The

summary recommended changes/additions to the master plan to include shifting the north fork of the Grindstone Trail to Battle High School from "Secondary" to a "Priority Trail", changes to bike polo court size, possible development of camping near the MKT Trail, revising the Trails chapter to include discussion of trail surfaces other than concrete and gravel, and partnering with the Boone County Government on the development of the Central Missouri Events Center, home of the Boone County Fair. Other items suggested by the public and discussed in the summary, but not recommended for further action in the plan include; removing all proposed trails along the Hinkson, Hominy and Little Bonne Femme Creeks; remove the 0.4 mile Bear Creek Connector between Blue Ridge Road (as it turns North) and Providence Road; adding connectors to the Bear Creek Trail; and prioritize the Perche Creek Trail including connections to Cosmo Park.

The final draft of the 2013 Parks, Recreation and Open Space Master Plan may be viewed at:
http://www.gocolumbiamo.com/ParksandRec/2013_Master_Plan/index.php

FISCAL IMPACT:

There is no fiscal impact with this report.

VISION IMPACT:

<http://www.gocolumbiamo.com/Council/Meetings/visionimpact.php>

12.1 Goal: A variety of attractive, well-maintained parks throughout Columbia-including neighborhood parks, regional parks, nature parks, and urban parks-will ensure all residents have access to a full range of outdoor and indoor recreational opportunities.

12.1.1 Strategy: Examine existing park networks and identify gaps in the different defined types of parks.

12.1.2 Strategy: Develop an overall plan to make sure as many park needs as possible are met without unnecessary duplication.

5 Vision Statement, Development: Columbia, Boone County and the surrounding region, protect and preserve the natural environment, agricultural areas, and cultural resources; provide adequate infrastructure; included diverse, mixed-use, walkable and bicycle friendly neighborhoods; and develop in ways that positively contribute to and sustain community culture, heritage, and character. Our community accomplishes these ends through an open, inclusive, transparent, predictable, and accountable planning process with fair allocation of costs.

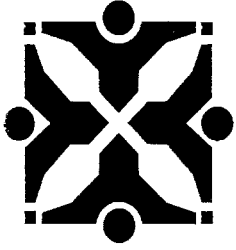
SUGGESTED COUNCIL ACTIONS:

Staff is recommending that Council schedule a final public hearing on the plan. Following the public hearing, Council may direct staff to return to Council with the plan as presented or with Council revisions. Once direction is given, staff will return to Council with an Ordinance to approve the final 2013 Parks, Recreation and Open Space Master Plan.

FISCAL and VISION NOTES:					
City Fiscal Impact Enter all that apply		Program Impact		Mandates	
City's current net FY cost	\$0.00	New Program/ Agency?	No	Federal or State mandated?	No
Amount of funds already appropriated	\$0.00	Duplicates/Epands an existing program?	No	Vision Implementation impact	
Amount of budget amendment needed	\$0.00	Fiscal Impact on any local political subdivision?	No	Enter all that apply: Refer to Web site	
Estimated 2 year net costs:		Resources Required		Vision Impact?	Yes
One Time	\$0.00	Requires add'l FTE Personnel?	No	Primary Vision, Strategy and/or Goal Item #	12, 12.1, 12.2
Operating/ Ongoing	\$0.00	Requires add'l facilities?	No	Secondary Vision, Strategy and/or Goal Item #	5
		Requires add'l capital equipment?	No	Fiscal year implementation Task #	39

You can view the
**2013 Parks, Recreation and
Open Space Master Plan –
Draft Plan**
at the following website:

http://www.gocolumbiamo.com/ParksandRec/2013_Master_Plan/



Source: Parks and Recreation

Agenda Item No:

To: City Council**From: City Manager and Staff****Council Meeting Date:** Apr 15, 2013**Re:** Report: 2013 Parks, Recreation and Open Space Master Plan Draft Plan**EXECUTIVE SUMMARY:**

Parks & Recreation staff has completed the first draft of the 2013 Parks, Recreation and Open Space Master Plan and is requesting authorization to proceed with the final round of public input. Staff is planning on soliciting public input by placing draft copies of the plan at the Daniel Boone Regional Library and at various P&R facilities. Staff will also conduct an interested parties meeting at the ARC on April 24 from 5:00-7:00 pm where park planners will be available to discuss the plan. The plan will be posted on the department's website with an online comment form. Staff is also recommending that Council send the plan to various City Commissions for their comments. Once this round of public input is complete, staff will return to Council with a report that documents public and commission input and request a public hearing. Following the public hearing, a final plan will be presented to Council for final approval. Council may find a copy of the plan online at http://www.gocolumbiamo.com/ParksandRec/2013_Master_Plan/index.php. If a Council member prefers a hard copy, please inform staff and a hard copy will be made available.

DISCUSSION:

Park planning staff officially began soliciting public input on the plan with a meeting on October 18, 2011. Since that initial meeting, Department staff communicated with a total of 58 park user groups (over 325 citizens) at 45 separate meetings throughout an eleven-month time period. Input was obtained in a variety of forums: community-wide meetings, small focus group meetings and boards and commission meetings. In addition to public meetings, the Department conducted both a citywide citizen survey and a park user survey in order to help provide insight into the community's desire for public facilities and recreation programming. ETC Institute/Leisure Vision was contracted to conduct a random citizen survey in March and April 2010 and obtained 753 completed household surveys. Based on input received from the random survey, staff conducted a similar online park user survey in November and December 2011. The Department received a total of 786 completed park user surveys that were analyzed by the University of Missouri's, Parks, Recreation and Tourism Department. The survey instrument and charts/graphs from both surveys can be found in Appendix B of the draft 2013 Parks & Recreation Open Space Master Plan.

Highlights of the draft 2013 P&R Master Plan include:

- Record number of citizen input (1,539 completed surveys plus 325 citizens representing 58 park user groups)
- Includes two new chapters: Parks & Recreation Strategic Plan and an Accomplishments chapter that highlights what projects were completed since the 2002 P&R Master Plan.
- Visioning goals and strategies are discussed in respective areas such as acquisition, development and improvement of parks, trails and facilities.
- Trend chapter has three sections: Section I reviews national trends that have an impact on the Department as a whole. Section II reviews local municipal parks and recreation policy and operating trends and Section III reviews facility and program trends that directly relates to the field of parks and recreation.
- Walking and biking trails ranked as the number one facility need (76%). Walking and biking trails also ranked first as the most important recreation facility (37%), and 70% of respondents indicated a recent visit.
- The proposed 2013 Trails Master Plan identifies 5 priority trail acquisition and development projects that are further divided into smaller sections.
- Neighborhood parks, community parks, playground equipment/play areas, and park shelters/picnic areas were the second, third, fourth, and sixth (respectively) most important facilities to survey respondents.
- The proposed 2013 Neighborhood Parks Plan is recommending 5 new parks for priority acquisition.
- The majority of survey respondents expressed a need for parks shelters/picnic areas (70%), neighborhood

parks (68%), community parks (66%), and playground equipment/play areas (51%).

-The survey revealed that the vast majority (87%) of Columbia citizens use the parks, significantly more than the national benchmarking average of 72%. The majority of respondents (77%) felt City officials should place a high or very high priority on maintaining the existing parks, trails and recreation facilities.

-The number one recreation program most important to households (29%) and that households participate in most often (25%) was special events/festivals. Survey respondents ranked special events/festivals as the top recreation program need (46%). Youth and teen sports programs were the second most important (15%) in terms of participation and third in overall importance (12%).

-Recommended Capital Improvements chapter includes an analysis of needed improvements for existing parks, trails and facilities; new facilities in categories such as tourism development and community based; and those facilities that may be developed by two or more agencies or private partners.

-The plan includes the proposed Fiscal Year 2014 Capital Improvement Plan (CIP). The CIP serves as an effective planning tool for identifying current and future capital projects and funding sources. The plan is prepared and adjusted annually and serves as a critical component of the City's budget.

-The renewable 1/8-cent Park Sales Tax is the Department's primary source of funding for capital projects and for implementation of the 2013 P&R Master Plan.

For this next round of public input, park staff will place copies of the plan at the multiple parks and recreation facilities, the Daniel Boone Regional Library, and online at the parks and recreation website. The specific link is: http://www.gocolumbiamo.com/ParksandRec/2013_Master_Plan/index.php

Readers of the plan will be encouraged to complete comment forms at the various sites or submit their comments via email or through an online survey. Staff is also planning on conducting an interested party meeting on Wednesday, April 24 from 5:00-7:00 pm at the Activity and Recreation Center where park planners will be available to answer questions about the proposed plans.

Park planners will also attend various programs, events and functions that provide additional opportunities for public comments. These include recreation programs such as the Family Fun Fest, neighborhood meetings, fairs, or any other functions that provide the opportunity for staff to discuss the plan with groups or individuals.

Staff is also recommending that the Council consider directing staff to solicit comments from the following commissions at either their April or May meetings: Parks & Recreation, Bike and Pedestrian, Disabilities, Historic Preservation, and the Energy and Environment. Staff will provide each commissioner with a digital copy and provide each commission one hard copy if so requested.

Once this round of public feedback has been completed, park staff will return to Council with a request to host a public hearing. As part of this public hearing, staff will prepare a report documenting any proposed changes to the plan based on public and commission input. At the end of the public hearing it is recommended that Council direct staff to proceed with a final 2013 Parks, Recreation and Open Space Master Plan with the revisions as noted by staff, public and Council. At a follow-up meeting, staff will return to Council with a resolution that accepts the plan.

FISCAL IMPACT:

There is no fiscal impact with this report.

VISION IMPACT:

<http://www.gocolumbiamo.com/Council/Meetings/visionimpact.php>

12.1 Goal: A variety of attractive, well-maintained parks throughout Columbia-including neighborhood parks, regional parks, nature parks, and urban parks-will ensure all residents have access to a full range of outdoor and indoor recreational opportunities.

12.1.1 Strategy: Examine existing park networks and identify gaps in the different defined types of parks.

12.1.2 Strategy: Develop an overall plan to make sure as many park needs as possible are met without unnecessary duplication.

5 Vision Statement, Development: Columbia, Boone County and the surrounding region, protect and preserve the natural environment, agricultural areas, and cultural resources; provide adequate infrastructure; included diverse, mixed-use, walkable and bicycle friendly neighborhoods; and develop in ways that positively contribute to and sustain community culture, heritage, and character. Our community accomplishes these ends through an open, inclusive, transparent, predictable, and accountable planning process with fair allocation of costs.

SUGGESTED COUNCIL ACTIONS:

If Council concurs that public review of the 2013 Parks, Recreation and Open Space Master Plan should occur, please direct staff to proceed.

FISCAL and VISION NOTES:					
City Fiscal Impact Enter all that apply		Program Impact		Mandates	
City's current net FY cost	\$0.00	New Program/ Agency?	No	Federal or State mandated?	No
Amount of funds already appropriated	\$0.00	Duplicates/Expands an existing program?	No	Vision Implementation impact	
Amount of budget amendment needed	\$0.00	Fiscal Impact on any local political subdivision?	No	Enter all that apply: Refer to Web site	
Estimated 2 year net costs:		Resources Required		Vision Impact?	Yes
One Time	\$0.00	Requires add'l FTE Personnel?	No	Primary Vision, Strategy and/or Goal Item #	12, 12.1, 12.2
Operating/ Ongoing	\$0.00	Requires add'l facilities?	No	Secondary Vision, Strategy and/or Goal Item #	5
		Requires add'l capital equipment?	No	Fiscal year implementation Task #	39

PARKS AND RECREATION COMMISSION

Thursday, May 16, 2013, 7 p.m.

ARC, 1701 W. Ash

MINUTES

Commission Present: Marin Blevins, Sue Davis, Terry Kloeppel, Dan Devine, Meredith Donaldson, Linda Hutton

Commission Absent: Bill Pauls

Staff Present: Mike Griggs, Gabe Huffington, Erika Coffman, Tammy Miller

Blevins called the meeting to order at 7:02 pm.

Agenda: Griggs asked the Commission to remove the item Staff Presentation from the agenda; that will be rescheduled to the July meeting. Agenda was approved as amended on a motion by Kloeppel, seconded by Davis.

Minutes: The April meeting minutes were approved on a motion by Kloeppel, seconded by Donaldson.

Monthly Report: The April monthly report was approved on a motion by Hutton, seconded by Davis.

Rezoning – Collegiate Housing Partners

Griggs told the Commission that Collegiate Housing Partners is requesting this particular rezoning for a development called the Residences at 5th and Conley. It would be a 106-unit housing complex, located near the MKT Trail.

Donaldson made a motion, seconded by Davis, that the Commission does not foresee any adverse impact on the MKT Trail from the proposed rezoning. Motion passed, 6-0.

P&R Master Plan Review and Discussion

Griggs shared a presentation with details about the proposed 2013 P&R Master Plan. He reminded the Commission of how the data was gathered and shared standards of how our facilities are rated, according to state goals. For example, the City surprisingly is somewhat deficient in miles of trails, based on what is expected of our city of our size and population. This is based on comparisons with other cities.

Griggs then shared information on trends. These range from national to municipal to facility and program trends. Those include things such as tobacco-free zones in parks, increased technology, sports tourism facilities, and sustainable design. They are all detailed in the Trends chapter in the Master Plan.

Results of the last citizen survey also played a huge part in drafting the Master Plan, and Griggs shared some of those with the Commission.

Devine asked about a result on the question of what prevents the household from using parks. Seven percent had answered that security is insufficient.

Griggs answered that he was not sure of the reason

Kloeppel added that it may have been at the time of the survey, something had happened at a park which spotlighted an issue. Griggs agreed that that could have been the case.

Griggs then showed park coverage maps to the Commission.

Five new neighborhood parks are proposed. The City is well served by community parks and regional parks.

Griggs commented that staff is making changes to the trail chapter to show all different types of surfaces, rather than focusing on concrete. He then showed how park acreages have changed over the years as related to the population, and projected to 2022. He closed his presentation by talking about recommended capital improvements and shared public comments. He said he included the public comments that were not already in the draft plan.

Griggs asked the Commission to take action on the plan tonight, whether it is to recommend approval or make any changes.

Devine mentioned that he would still like to see mandatory land dedication for parks by developers be enacted by ordinance. He sees that as a solution to acquiring parkland in the future.

Griggs pointed out a section of the master plan that identifies potential funding sources.

Devine agreed but said that he thinks the mandatory land dedication could be part of the process as well.

Kloeppel asked if that had ever made it to a Council vote?

Griggs said he thought the issue had only been discussed at the Commission level.

Donaldson asked what kind of response such a proposal would have from developers?

Griggs said he thought it might have 50-50 support. Some see the value of parks and what they add to property values. Others want to develop as much of their site themselves as possible. He thinks that as time passes, there may be more developers willing to donate land for parks. He added that the current Council may be receptive to discussing such an ordinance.

Devine then asked about the section on trails and the overpass on Stadium over I-70?

Griggs said that has been removed. It formerly discussed as a GetAbout project but had little support. The Cosmo Park connector would replace it in conjunction with the new interchange, making it virtually a pedway project.

Griggs added that there are not enough funds for the trails shown. He asked if some should be shifted around on the priority list?

Devine said he would be in favor of moving the north fork of Grindstone up which would lead to Battle High School. He asked Griggs about trail surface, whether there is any type of artificial turf that could be considered?

Griggs responded that he has not seen any. He mentioned a type of trail surface he had seen in Oklahoma City that is almost like a floating concrete, with a one-inch overlay of rubberized track. Such a surface would be less maintenance than a side path.

Devine then commented on how communication is done with residents on projects. He has been concerned with the negative response regarding projects such as the Grindstone Trail and Bonnie View. He has confidence that as these projects are completed, people will see the value of them, but he is not uncomfortable getting to the point of considering eminent domain. He asked if there is a way to forecast projects earlier and avoid such issues?

Griggs said ideally, yes, however it is difficult sometimes to introduce a trail to an area that has been developed for 25 years. With new developments, it is much easier because trail easements can be obtained early in the process. He said the most difficult part now is connecting existing trails.

Davis asked about the city generating its own special events?

Coffman said the idea is to use our own facilities and trails to our advantage. A new recreation specialist is being hired to coordinate events on the trails and entry-level type of races. This will also help promote health and fitness in another venue besides the ARC.

Griggs added that it seems the next level of events is concerts. He said we could plan one and pay for some of our programs. We will keep planning and offering free events but will also explore the idea of larger, paid events.

Davis then asked about the overall plan for Twin Lakes?

Griggs said staff envisions it becoming a water park for all ages with more water features and hill-side types of features. But that would be in the future.

Hutton commented that she would like to see a different photo of Stephens Lake Park on page 374, maybe one of the waterfall. She also said she wants to ensure that any possible shelter off of Old 63 does not alter the view of the lake and the park.

Kloeppel asked if there was more support shown for an ice rink? He'd like to see a higher priority for that, even if a private partnership is needed.

Griggs said citizen surveys don't rate ice as high. But he thinks it will be an important discussion to have when it comes time for the next Park Sales Tax ballot.

Devine made a motion, seconded by Donaldson that the Commission recommend adoption of the 2013 Parks, Recreation and Open Space Master Plan with the following changes: shifting the north fork of the Grindstone Trail to Battle High School from secondary to priority trail, proposed changes to bike polo court size, camping along the MKT Trail, and revisions to the Trails chapter. Motion passed, 6-0.

Columbia Imagined Comprehensive Plan

Griggs reminded the Commission of Planning's request that they offer input on the City's comprehensive plan, Columbia Imagined. An on-line survey has been established. Commissioners agreed that they would complete the survey individually.

Hutton made a motion, seconded by Davis, that the Parks and Recreation Commission supports the plan and encourages continued collaboration between the Parks and Recreation and Planning departments to ensure the goals of the master plan are being met. Motion passed, 6-0.

Naming of 3M Project

Griggs shared a list of potential names of the urban restoration project that was shared with 3M. A name was chosen and the Commission agreed that due to 3M's financial support, their choice should be honored.

Kloeppel made a motion, seconded by Donaldson, that the Commission recommend to Council that the site be named the 3M Flat Branch-Hinkson Creek Wetlands. Motion passed, 6-0.

Council Items

Griggs shared these updates:

Blind Boone Home: P&R will serve as project manager on the project of renovating the home's interior. About \$326,000 in funds are available. Council is expected to approve it at an upcoming meeting.

School Agreements: two agreements are expected to be approved, one for the resurfacing of the tennis courts at Bethel and the other for expansions of the gyms that will be built as part of the two new elementary schools that will be built in upcoming years. The department will contribute \$150,000 for each so that the gyms will be built slightly larger than usual for use outside of school activities.

COW: Otherwise known as Cell on Wheels, this could be a contentious item, Griggs said. If state legislation is passed, that would give cell companies authority to locate towers wherever they wish, if the city has a cell tower already. A COW is planned right now for the middle of the parks management facility. Should this become permanent,

staff will propose that it remain in PMC, not Cosmo Park. The company had originally wanted to place it near Harris Shelter. The department will get funds from the company for the youth sports fund.

Bgreen for CoMo: this is a collaborative effort between Parks and Recreation, the University of Missouri, Columbia Public Schools, and the Columbia Center for Urban Agriculture. Their work will focus on research pertaining to environmental education within the community. We'll assist by coordinating field activities at the 3M area with fourth and fifth graders.

Park Project Update

Huffington shared these updates:

Twin Lakes: work is ending on the Little Mates Cove office and concession building, as well as Little Mates itself. A small shelter is also planned near the site which will serve as a location for birthday parties. ADA parking improvements and a new entrance sign will complete the work.

Albert-Oakland: work on the baseball fields continues as the weather allows.

Nickell Clubhouse: new windows have been installed.

Lions Stephens: trail construction has begun.

Bonnie View: new restroom is in place, as is a new stone park sign, walkways and landscaping.

Cosmo Park: new shelter/concession at football/lacrosse fields underway.

Atkins Park: concessionaire parking in place. New ag lime infield at Gold field.

Bear Creek Trail connector: has new signs.

Parklet: temporary installation at Ninth and Cherry that has been a huge success. It may be moved around to different locations.

Recreation Services Update

Coffman shared these updates:

Earth Day: first-time bike valet event was successful with 98 taking advantage of the free service.

Friends of Parks: event held at Cosmo on April 28. Another event will be held in the fall.

GetAbout Columbia: some trail etiquette signs were installed temporarily to remind trail users of basic safety. They will be moved around to different locations.

Bike, Walk and Wheel Week: has been a big success with great participation all week, including ABCs of On-Road Cycling, Cyclofemme Ride, Walking Art Tour and Family Fun Fest bikes.

Family Fun Fest: Fitness is Fun was this month's theme with great attendance.

Community Recreation: lock-ins were held in April.

Preschool Programs: continue to be successful.

Tumble Tots: a long-time life enrichment program, continues in popularity.

OAK Tours: spring surprise trip recently to Flint Hills Discovery Center in Manhattan, Kansas.

Upcoming Events: BWWW Breakfast Stations, Trails 5K/10K, Stephens Lake Amphitheater Concert Series, Pools open, Fishing Derby, Art in the Park, Shred Fest, and Movies in the Park.

Staff Comments

Griggs reminded the Commission that the June meeting would consist mainly of the park tour, starting at 5 pm at Parks Management Center. He asked if there were any particular sites the Commission would like to see?

Kloeppel requested a stop at the property near Battle High School.

Griggs said it would be added and that if there were any more requests to let Miller know.

Griggs shared a performance report prepared by the City Manager's office and the latest statistics from the department's Facebook page.

Commission Comments

Davis asked if the garden plots at Fairview had been plowed?

Huffington said he would check and let her know.

Public Comments

None.

Meeting adjourned at 9:20.

2013 Parks, Recreation and Open Space Master Plan Public Comments and Staff Recommendations Summary

I. REVISE THE TRAIL ACQUISITION AND DEVELOPMENT CHAPTER

A. Trail Surface Types

Public Comment(s): Change emphasis from concrete trails to diversity of trail surface types.

Staff Recommendation: Revise Trail Acquisition and Development Chapter to include discussion of pros and cons of various trail surface types and recommendation to evaluate each trail project on a case-by-case basis when selecting the trail surface.

B. Trails Plan

Public Comment(s): Change the North and South Forks of the Grindstone Creek Trail from secondary to primary, with a preference for the North Fork which leads to Battle High School.

Staff Recommendation: Change the North Fork of the Grindstone Creek Trail from secondary to primary as it is the one that connects to Battle High School.

Public Comment(s): Remove the 0.4 mile Bear Creek Connector between Blue Ridge Road (as it turns north) and Providence Road.

Staff Recommendation: No recommendation. Staff supports keeping it a secondary priority which means it will likely not be funded until priority trails are completed.

Public Comment(s): Prioritize trail development along the Perche Creek, specifically, providing a connection to Cosmo Park from the west.

Staff Recommendation: No recommendation. The trails plan includes this connection. It will become a higher priority for funding when development occurs north of I-70 and west of Cosmo Park.

Public Comment(s): Received 17 comments in support of the Trails Plan with eight specifically in support of the Grindstone Creek Trail. There were two comments not in support of trail development around Hinkson, Little Bonne Femme, and Hominy Creek. Trail funds should be spent on more fields.

Staff Recommendation: No changes to the Trails Plan other than recommended above.

II. REVISE THE RECOMMENDED CAPITAL IMPROVEMENTS CHAPTER

A. Skate Parks

Public Comment(s): Under Section I-Existing Facilities/Douglass Park, change “construct small skate park (FAL)” to “construct small skate facility (FAL).”

Staff Recommendation: Under Section I-Existing Facilities/Douglass Park, change “construct small skate park (FAL)” to “construct small skate facility (FAL).”

Public Comment(s): Received 175 comments in support of more and expanded skate park facilities - specifically requesting lights at Columbia Skate Park, expansion of Columbia Skate Park, and satellite skate facilities located throughout the city.

Staff Recommendation: No changes other than recommended above, as skate park requests are already identified in the Master Plan.

B. Bike Polo Courts

Public Comment(s): Change bike polo courts size to 145’ x 65’.

Staff Recommendation: Change bike polo courts size to 145’ x 65’ (p. 210).

C. MKT Trail - Camp Sites

Public Comment(s): Add bicycle camping sites along the MKT Trail.

Staff Recommendation: Under Section I-Existing Facilities/MKT Trail, add “10 basic camping sites (FAL) - \$10,000.”

D. Equestrian Trails

Public Comment(s): Add equestrian trail partnership with Boone County at Fairgrounds and Atkins Park.

Staff Recommendation: Under Section I-Existing Facilities/Atkins Park, add “equestrian loop trail and connection to Fairgrounds (partnership with Boone County) - \$300,000.”

E. Disc Golf

Public Comment(s): More disc golf courses and add 1-3 disc golf baskets in parks in the south and west areas of town.

Staff Recommendation: No changes recommended, as development of a championship disc golf course is identified on page 220 and adding disc golf

baskets in existing parks can be accomplished in the “misc. park improvements” listed for most parks in Section I-Existing Facilities.

F. Central Missouri Events Center

Public Comment(s): Continue to work with the Boone County Commission on the development of the Central Missouri Events Center, home of the Boone County Fairgrounds. This includes completing the recreational amenities as shown on the master plan and providing trail connectivity.

Staff Recommendation: Under Section II, New Facilities Undetermined, Item III. Cooperative Joint-Use Facility, (page 221) staff is proposing that the Central Missouri Events Center be listed with a budget dollar amount of \$1,250,000.

G. Other Recreation Facilities and Miscellaneous Requests

Public Comment(s): Requests for various other recreation facilities, such as bike parks, BMX tracks, sports fields, inclusive playgrounds, more fishing opportunities, large indoor shelter, ice rink, rock climbing facilities, aquatic facility in south part of town, and existing park improvements.

Staff Recommendation: No changes recommended, as items requested are either already included in the Master Plan or are determined at the time a park master plan is developed for a new property (i.e., lake development for fishing opportunities).

Introduced by _____ Council Bill No. R 121-13

A RESOLUTION

setting a public hearing to consider the proposed 2013 Parks,
Recreation and Open Space Master Plan.

BE IT RESOLVED BY THE COUNCIL OF THE CITY OF COLUMBIA, MISSOURI, AS
FOLLOWS:

SECTION 1. A public hearing will be held before the City Council of the City of Columbia, Missouri in the Council Chamber in the City Hall Building, 701 E. Broadway, Columbia, Missouri on July 15, 2013 at 7:00 p.m. to consider the proposed 2013 Parks, Recreation and Open Space Master Plan. All citizens and interested persons will be given an opportunity to be heard.

SECTION 2. The City Clerk is hereby directed to cause notice of this hearing to be published in a newspaper of general circulation in Boone County, Missouri.

ADOPTED this _____ day of _____, 2013.

ATTEST:

City Clerk

Mayor and Presiding Officer

APPROVED AS TO FORM:

City Counselor