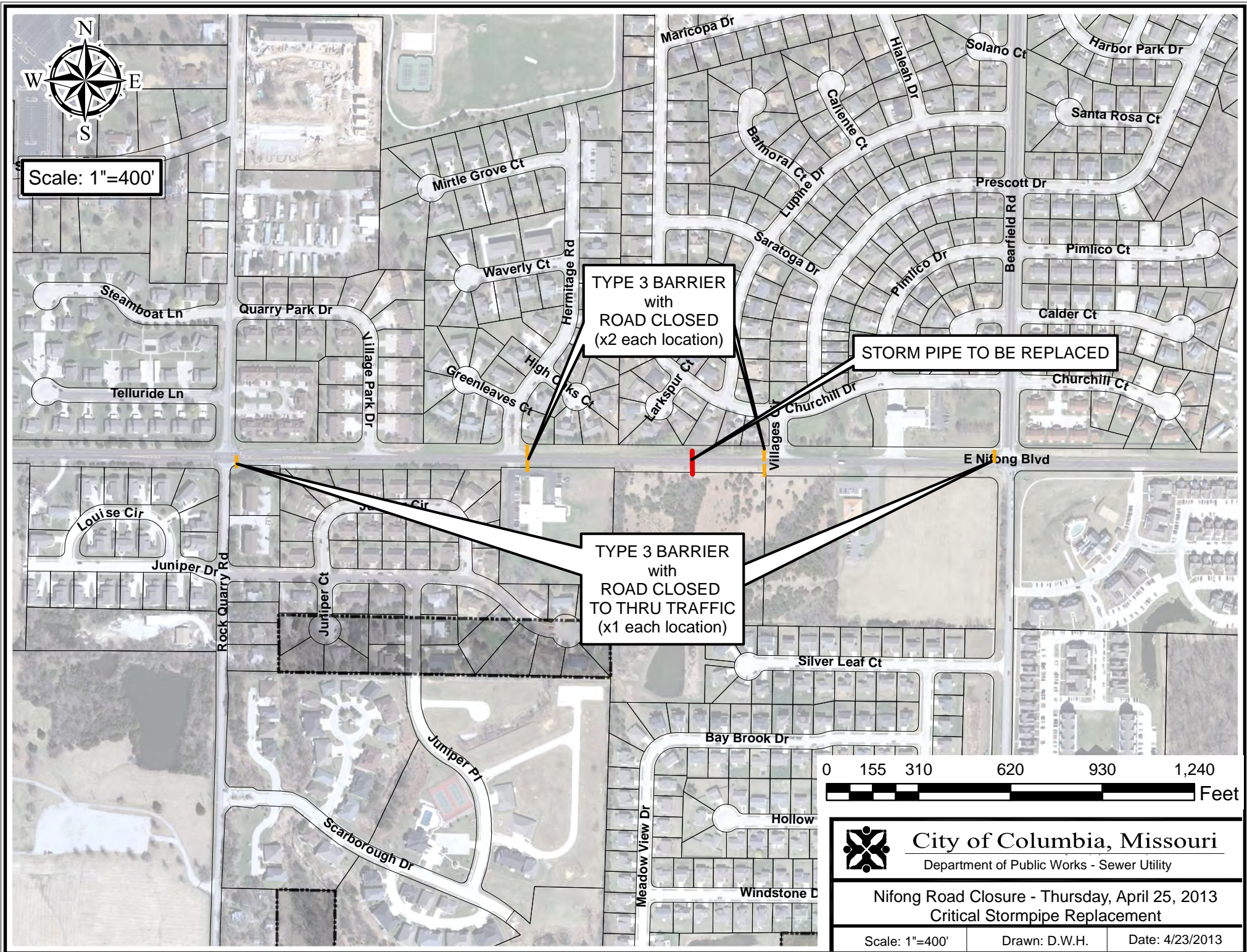




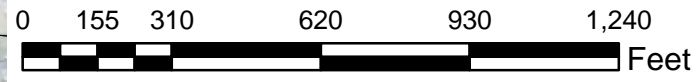
Scale: 1"=400'



TYPE 3 BARRIER
with
ROAD CLOSED
(x2 each location)

STORM PIPE TO BE REPLACED

TYPE 3 BARRIER
with
ROAD CLOSED
TO THRU TRAFFIC
(x1 each location)



City of Columbia, Missouri

Department of Public Works - Sewer Utility

Nifong Road Closure - Thursday, April 25, 2013
Critical Stormpipe Replacement

Scale: 1"=400' Drawn: D.W.H. Date: 4/23/2013